

## QT4 Series Symbian Setup

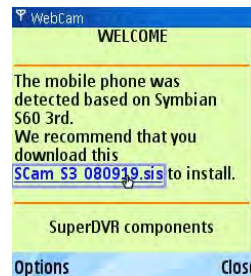
Please use the smart phones with Symbian versions supported by this unit (OS 3 & OS 5).

**Step 1** : First enable the network access on the mobile phone. Then run Web browser.

**Step 2** : Input the DVR's IP address in a new-built bookmark. Click this bookmark to connect to the DVR.



**Step 3** : A welcome window will pop up and requires a package. Click the software name to download



**Step 4** : A security window will pop up after downloading and ask if you want to install the package. Click YES to install.

**Step 5** : A Scam shortcut icon appears on the system menu after finished.

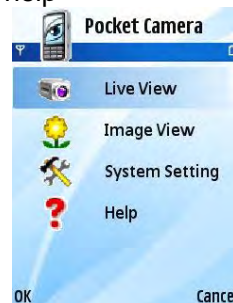
**Step 6** : Run Scam program. It will display a function interface.

**Live view:** to do mobile live view

**Image view:** to check the pictures snapped in live view

**System setting:** Login setting and Alarm setting.

**Help:** function indication and help



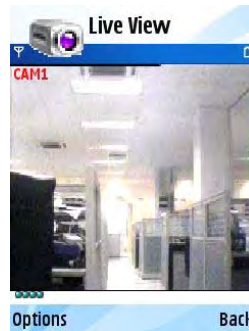
**Step 7** : Click System setting--->Login Setting to enter login interface.



**Step 8** : Input the DVR's address, ID and password respectively. Then save.

Notice: *About Access point, there may be different access points in different countries or from service providers.*

**Step 9** : Enter Live View, it will connect to the server and display pictures.



Notice: *User name and password here are the same with that used on the DVR. The default is admin and 123456.*

**Step 10** : In Live View, users can do snapshot, change channels and control PTZ cameras.

