

# SMS GSM Alarm Messenger



- Data Logging
- Alarm Input
- Relay Output
- Voice
- Temperature
- Humidity
- Analog Input

Capture and Send Data via SMS  
Report triggered alarm via SMS  
Output triggered via SMS  
Auto pick up for voice monitoring  
Integrated temperature sensor  
Integrated humidity sensor  
Capture Analog Channels

**GSM Module Integrated**

## Data Capturing

- Data Capture via 2 x Analog Digital Channels
- Automatic data report via SMS on programmable schedule
- Data report via SMS when receiving SMS command
- Automatic SMS alerts when data is above or below the preset levels
- Low operating voltage alert SMS



Door Contact Alarm  
is triggered



## Alarm Input

- 8 x Alarm Inputs
- 4 x Phone Numbers Alarm Dial Out
- Arm/Disarm by SMS
- Programmable SMS text
- Automatic send SMS to mobile phone when alarm is triggered

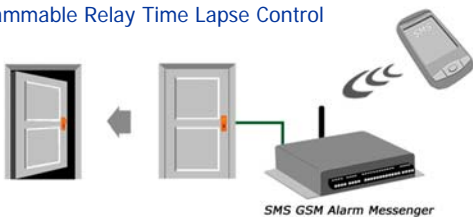
## Temperature Humidity Sensor

- [SMS Pro-S] Integrated Temperature sensor
- [SMS Pro-SX] External Attached Temperature & Humidity sensors
- SMS Alert on high or low temperature
- SMS Alert on high or low humidity
- Auto temperature & humidity report via SMS



## Relay Output

- 3 x Relay Outputs
- Alarm Triggered or SMS Control
- Control by mobile phone SMS
- Programmable Relay Time Lapse Control

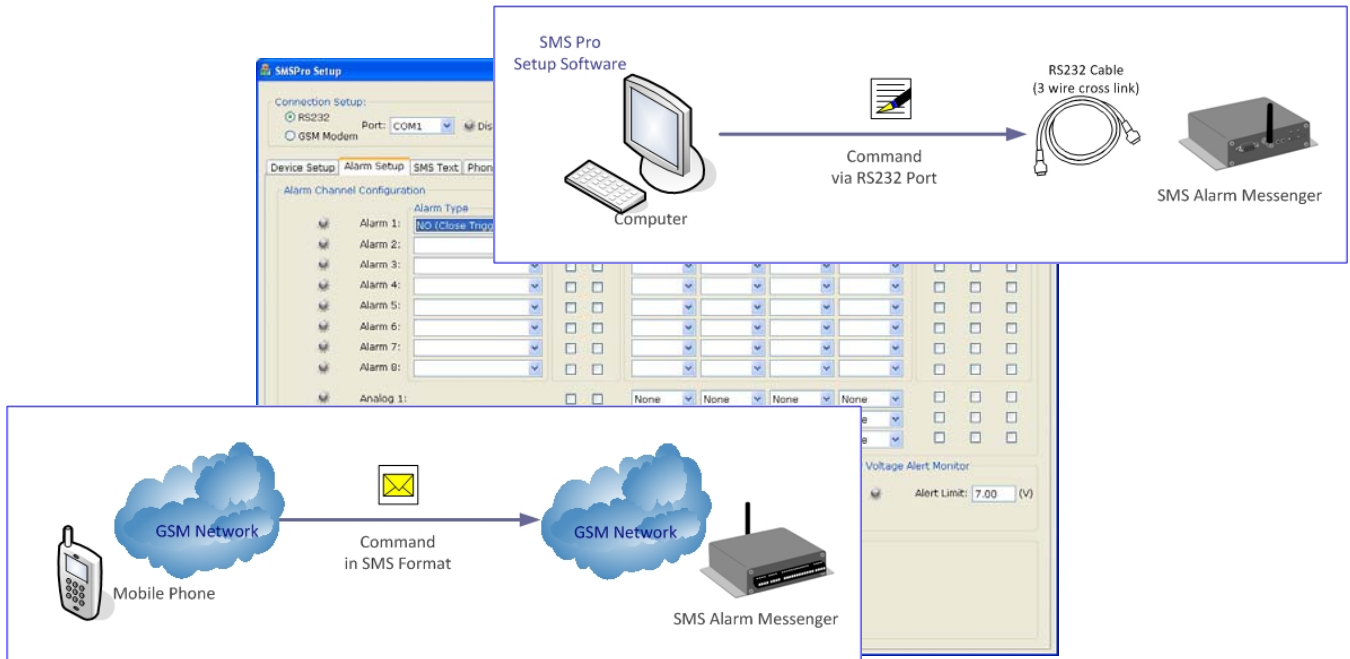


## Voice Monitoring /Voice Broadcasting



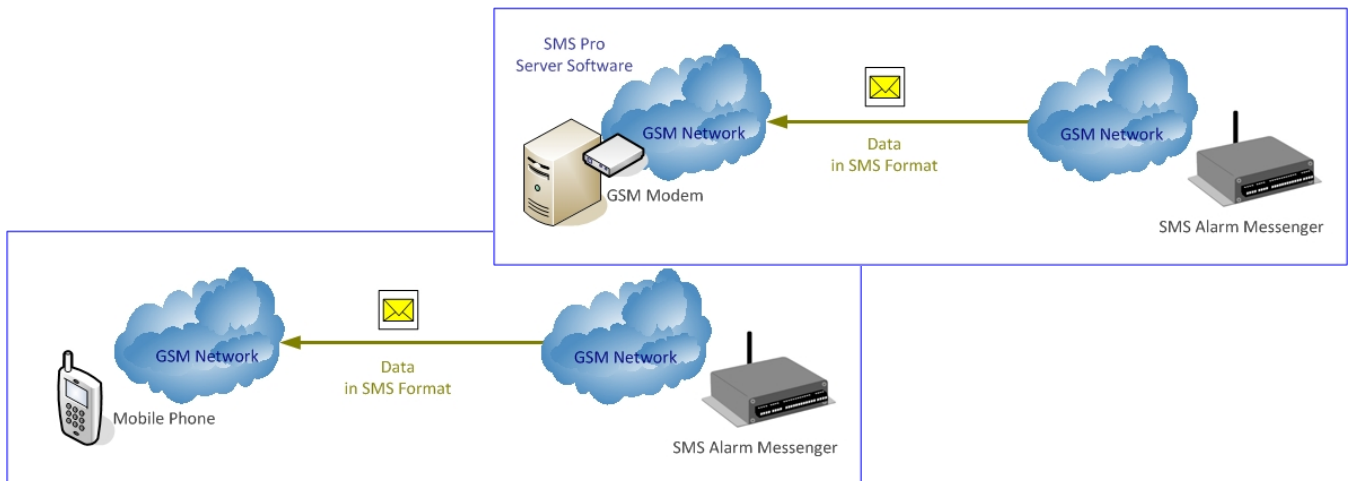
## Easy Setup SMS Alarm Messenger

- SMS Pro-X is equipped with a RS232 serial port for communicating with PC.
- PC Software "SMS Pro-X Setup" is bundled free for configuring the device with Windows based PC.



### How to receive the alarm SMS?

- Using PC with SMS Server software, all SMS will be maintained in database.
- User will receive the alarm SMS with mobile phones simultaneously.



## Application:

- *Intelligent Home Security*
- *Commercial Alarm Security*
- *Data Centre temperature monitoring*
- *Rural Area Security*
- *Data Collection in remote location, harsh condition or rural area*
- *Remote Industrial Equipment Monitoring*
- *Rural Equipment Monitoring e.g. Power Plant*

**SMS Pro-SX**



**GSM SMS Temp & Humidity Alarm**    Data / Voice / SMS / Alarm / Temp & Humidity Sensor

SMS Pro-SX is the GSM Data Logger integrated with temperature sensor built-in. In addition to standard features of SMS Pro-X, it captures the temperature and humidity data detected by the sensors, reports the data, sends alarm SMS when temperature or humidity is over or below user programmable values.



- \* 8 alarm inputs, 3 x relay outputs, voice input,
- \* Externally Attached Temperature & Humidity Sensor

**SMS Pro-S**



**GSM SMS Temp Alarm**    Data / Voice / SMS / Alarm / Temp Sensor

SMS Pro-S is the GSM Data Logger integrated with temperature sensor built-in. In addition to standard features of SMS Pro-X, it captures the temperature data detected by the internal sensor, reports the data, sends alarm SMS when temperature is over or below user programmable values.

- \* 8 alarm inputs, 3 x relay outputs, voice input, 1 x analog channels
- \* Integrated Temperature sensor [External or Internal]

**SMS Pro-X**



**GSM SMS Alarm Messenger**    Data / Voice / SMS / Alarm

SMS Pro-X is the most advanced GSM Data Logger integrated with GSM Dual Band Module (900/1800MHz). It captures data, monitor alarm inputs, sends alarm messages and data by SMS to mobile phone over the GSM network.

- \* 8 alarm inputs, 3 x relay outputs, voice input, 2 x analog digital channels

**SMS Pro**



**GSM SMS Alarm Messenger**    SMS / Alarm

SMS Pro-X is the most advanced GSM Data Logger integrated with GSM Dual Band Module (900/1800MHz). It captures data, monitor alarm inputs, sends alarm messages and data by SMS to mobile phone over the GSM network.

- \* 8 alarm inputs, 3 x relay outputs

**SMS Basic**



**GSM SMS Alarm Messenger**    SMS / Alarm

SMS Basic is the GSM SMS Modem integrated with GSM Dual Band Module (900/1800MHz) providing the basic functions. It detects alarm inputs, triggers the relay outputs, sends alarm messages by SMS to mobile phone over the GSM network.

- \* 8 alarm inputs, 1 x relay outputs

**SMS Demo Unit**



**GSM SMS Demo Unit**    Demonstration Purpose

It is designed for portable demonstration. Rechargeable battery is installed for the 9VDC power supply, and on/off switch, LED are designed for showing the operation of GSM SMS Alarm Messenger.

- \* 1 x rechargeable battery, 2 x on/off switch, 2 x LED

**SMS GSM Messenger** is designed and integrated with a 16 bit MCU and reliable Siemens GSM module.

#### Features

- ◆ Alarm Report by phone dial & SMS alarm message
- ◆ SMS alarm message text programmable
- ◆ Independent text message for each alarm
- ◆ Configuration setup by GSM mobile phone or PC (RS232)
- ◆ Arm/Disarm by GSM mobile phone
- ◆ Relay triggered by Alarm or SMS command
- ◆ Sound monitoring connecting to microphone
- ◆ Alarm Alert Modes – SMS, Phone Dial or SMS & Phone Dial

#### Alert

- ◆ GSM Network signal strength detection and alert
- ◆ Automatic Health Status report to GSM mobile phone
- ◆ Automatic power supply voltage level checking
- ◆ Automatic reporting on low power voltage level
- ◆ Alert message when analog inputs are higher or lower than preset values
- ◆ Reply message verifying the receipt of each command

#### Utility

- ◆ Windows Setup Software bundled free



#### Specification

- 2 channels x Analog Input
- Programmable high/low threshold values
- 8 x Alarm Inputs N/C, N/O, State Change
- 3 x Relay Outputs, NC/NO
- 4 x Mobile & Fixed Phone Number
- 2 x Central Station monitoring number
- Pro-S: Temp Sensor (-50 ~ 125°C)
- Pro-SX: Temp Sensor (-50 ~ 125°C)  
Humidity Sensor (1~99 RH)

#### Operation

Power Input:	DC8~15VDC, 1A
Send/Receive SMS:	200mA
Standby Mode:	30mA
Max. Rating:	<2A
Digital I/O:	DC8~15V
Analog Input:	4~20mA current type
Operating Temp:	-30 ~ 70°C
Standby:	-45 ~ 85°C
Dimension:	105 x 134 x 29 mm

Key Points

Features	Basic	Pro	Pro-X	Pro-S	Pro-SX	Pro-XQ	Pro-SXQ
Alarm Input	8	8	8	8	8	8	8
Relay Output	1	3	3	3	3	3	3
Phone Number	6	6	6	6	6	6	6
Low Voltage Alert	SMS Alarm	SMS Alarm	SMS Alarm	SMS Alarm	SMS Alarm	SMS Alarm	SMS Alarm
Program by SMS	✓	✓	✓	✓	✓	✓	✓
Program by PC software	✓	✓	✓	✓	✓	✓	✓
Analog Input Channel	-	-	2	1	0	2	0
AD Hi/Lo Alert	-	SMS Alarm	SMS Alarm	SMS Alarm	SMS Alarm	SMS Alarm	SMS Alarm
Sensor	-	-	-	Temperature	Temperature Humidity	-	Temperature Humidity
GSM Band (MHz)	900/1800	900/1800	900/1800	900 /1800	900 /1800	900/1800 850/1900	900/1800 850/1900